

Microsoft[®] Windows[®] 8.x and 10

Compatibility with Xerox[®] Equipment

December 2016



2016 Xerox Corporation. All rights reserved. Xerox®, Xerox and Design®, ColorQube®, DocuColor®, DocuPrint®, DocuSP®, DocuTech®, FreeFlow®, iGen®, iGen3®, iGen4®, Phaser®, WorkCentre® and Xerox Nuvera® are trademarks of or licensed to Xerox Corporation in the United States and/or other countries.

Changes are periodically made to this document.

Changes, technical inaccuracies and typographic errors will be corrected in subsequent editions. 12/16 SFTWP-03UE

Contents

- Xerox® Product Compatibility with Microsoft® Windows® 8.x and 10 2
 - Legend 2
- Compatibility Matrix 3
- What was new in Windows® 8.x? 19
 - New types of print drivers. 19
 - How to obtain print drivers. 20
 - How to install the new types of print drivers. 21
- How to use the new types of print drivers. 29
 - How to Print from a Windows® 8/10 Desktop App with a V3 or V4 Driver.. 29
 - How to Print from a Windows® 8/10 Modern UI or Universal App with a V4 or V3 Driver. 30
 - How to print from a Windows® 8/10 Desktop App using a class driver. 32
 - How to print from a Windows® 8 Modern UI App or Windows 10 Universal App using a class driver..... 33
 - Printing in Windows RT..... 34
 - Xerox and EFI Digital Front Ends..... 34
- Xerox Support Contact Information..... 35
- Additional Resources 35

Xerox® Product Compatibility with Microsoft® Windows® 8.x and 10

Like the fundamental redesign seen in the new user experience, printing has also undergone significant changes in Windows 8. Now, users are offered several choices of driver types—each is tailored for different workflows. The various driver types offer a unique user experience and set of features. With the introduction of Windows 8.1, Xerox continues to advance printing capabilities, adding support for advanced features like PIN based printing (secure print), shared properties across print queues, and updated improved class drivers. The print architecture has not changed between Windows 8.x and Windows 10 and the print drivers options available in Windows 8.x also apply to Windows 10.

Xerox provides extensive support for the various types of Windows 8.x and Windows 10 print drivers. The following table lists Xerox® products and information regarding Windows 8.x and Windows 10 print driver availability. The legend below briefly describes each of the driver types; a more extensive description, as well as helpful information regarding how to obtain, install and use these print drivers can be found at the end of this document. As Xerox releases new Windows 8 and Windows 10 print drivers, we will continue to deliver updated information.

Legend

| Driver Type | Description |
|-----------------------------|---|
| Version 4 Drivers | Optimized for Windows 8/10. Provides access to a richer set of features when printing from Modern UI Apps. |
| Version 3 Drivers | Supports full-featured Desktop printing. Includes support for printing from Modern UI Apps. |
| Xerox® Global Print Driver® | Xerox® Global Print Driver supports full-featured desktop printing. Includes support for printing from Modern UI Apps. For more information, visit www.xerox.com/global . |
| Class Driver | Print driver included in Windows 8/10 that enables basic printing from Modern UI apps and Desktop programs. |

Compatibility Matrix

| Product | Version 4 Drivers | Version 3 Drivers | Xerox® Global Print Driver® | Class Driver | Additional Information |
|---|-------------------|-------------------|-----------------------------|--------------------------------------|-------------------------|
| Xerox® Printers and Multifunction Printers | | | | | |
| Xerox® ColorQube® 8570 Color Printer | ● | ● | ● | Xerox® PS Color Class Driver | |
| Xerox® ColorQube 8580 Color Printer | ● | ● | ● | Xerox® PS Color Class Driver | |
| Xerox® ColorQube 8700 Color Multifunction Printer | ● | ● | ● | Xerox® Office XPS Color Class Driver | |
| Xerox® ColorQube 8870 Color Printer | ● | ● | ● | Xerox® PS Color Class Driver | |
| Xerox® ColorQube 8880 Color Printer | ● | ● | ● | Xerox® PS Color Class Driver | |
| Xerox® ColorQube 8900 Color Multifunction Printer | ● | ● | ● | Xerox® Office XPS Color Class Driver | |
| Xerox® ColorQube 9201/9202/9203 Color Multifunction Printer | | | ● | Xerox® Office PS Color Class Driver | |
| Xerox® ColorQube 9301/9302/9303 Color Multifunction Printer | ● | ● | ● | Xerox® Office XPS Color Class Driver | |
| Xerox® Phaser® 3010 Printer | ● ¹ | ● | | | |
| Xerox® Phaser 3020 Printer | ● ¹ | ● | | | |
| Xerox® Phaser 3040 Printer | ● ¹ | ● | | | |
| Xerox® Phaser 3052 Printer | ● ¹ | ● | | | |
| Xerox® Phaser 3100MFP Multifunction Printer | | ● | | | No Windows 10 Support |
| Xerox® Phaser 3117 Printer | ● ¹ | ● | | | |
| Xerox® Phase 3124 Printer | ● ¹ | ● | | | |
| Xerox® Phaser 3125 Printer | ● ¹ | ● | | | |
| Xerox® Phaser 3140 Printer | ● ¹ | ● | | | |
| Xerox® Phaser 3150 Printer | | | | | No Windows 8/10 Support |
| Xerox® Phaser 3155 Printer | ● ¹ | ● | | | |
| Xerox® Phaser 3160 Printer | ● ¹ | ● | | | |
| Xerox® Phaser 3200MFP Multifunction Printer | ● ¹ | ● | | | |
| Xerox® Phaser 3250 Printer | ● | ● | | | |
| Xerox® Phaser 3260 Printer | ● ¹ | ● | | | |

¹Driver compatibility currently undergoing evaluation. Please use the Windows 8 driver in the interim until compatibility is confirmed.

| Product | Version 4 Drivers | Version 3 Drivers | Xerox® Global Print Driver® | Class Driver | Additional Information |
|---|-------------------|-------------------|-----------------------------|-------------------------------|------------------------|
| Xerox® Phaser 3300MFP Multifunction Printer | ● ¹ | ● | ● | Xerox® PS Class Driver | |
| Xerox® Phaser 3320 Printer | ● ¹ | ● | ● | Xerox® PS Class Driver | No Windows 10 Support |
| Xerox® Phaser 3428 Printer | | ● | | | |
| Xerox® Phaser 3435 Printer | ● ¹ | ● | | Xerox® PS Class Driver | |
| Xerox® Printers and Multifunction Printers—Continued | | | | | |
| Xerox® Phaser 3500 Printer | | | | Xerox® PS Class Driver | |
| Xerox® Phaser 3600 Printer | ● ¹ | ● | ● | Xerox® PS Class Driver | |
| Xerox® Phaser 3610 Printer | | ● | ● | Xerox® Office PS Class Driver | |
| Xerox® Phaser 3635MFP Multifunction Printer | | ● | ● | Xerox® PS Class Driver | |
| Xerox® Phaser 4500 Printer | | | ● | Xerox® PS Class Driver | |
| Xerox® Phaser 4510 Printer | | | ● | Xerox® PS Class Driver | |
| Xerox® Phaser 4600/4620 Printer | ● | ● | ● | Xerox® PS Class Driver | |
| Xerox® Phaser 4622 Printer | | | ● | | |
| Xerox® Phaser 5335 Printer | | | | | No Windows 10 Support |
| Xerox® Phaser 5500 Printer | | | ● | Xerox® PS Class Driver | |
| Xerox® Phaser 5550 Printer | | ● | ● | Xerox® PS Class Driver | |
| Xerox® Phaser 6000 Color Printer | ● ¹ | ● | | | |
| Xerox® Phaser 6010 Color Printer | ● ¹ | ● | | | |
| Xerox® Phaser 6020 Color Printer | ● ¹ | ● | | | |
| Xerox® Phaser 6022 Color Printer | ● ¹ | ● | | | |
| Xerox® Phaser 6110 Color Printer | | ● | | | |
| Xerox® Phaser 6110MFP/S/X Color Multifunction Printer | | ● | | | |
| Xerox® Phaser® 6110MFP/B Color Multifunction Printer | | ● | | | |
| Xerox® Phaser 6115MFP Color Multifunction Printer | | ● | | | |
| Xerox® Phaser 6120 Color Printer | | | | Xerox® PS Color Class Driver | |

¹Driver compatibility currently undergoing evaluation. Please use the Windows 8 driver in the interim until compatibility is confirmed.

| Product | Version 4 Drivers | Version 3 Drivers | Xerox® Global Print Driver® | Class Driver | Additional Information |
|---|-------------------|-------------------|-----------------------------|---------------------------------------|------------------------|
| Xerox® Phaser 6121MFP Color Multifunction Printer | | ● | | | No Windows 10 Support |
| Xerox® Phaser 6125 Color Printer | | ● | | | |
| Xerox® Phaser 6128MFP Color Multifunction Printer | ● ¹ | ● | | Xerox® Office PCL6 Color Class Driver | |
| Xerox® Phaser 6130 Color Printer | | ● | | Xerox® PS Color Class Driver | No Windows 10 Support |
| Xerox® Phaser 6140 Color Printer | ● ¹ | ● | | Xerox® PS Color Class Driver | |
| Xerox® Phaser 6180 Color Printer | | ● | ● | Xerox® PS Color Class Driver | No Windows 10 Support |
| Xerox® Phaser 6180MFP Color Multifunction Printer | | ● | ● | Xerox® PS Color Class Driver | No Windows 10 Support |
| Xerox® Phaser 6250 Color Printer | | | ● | Xerox® PS Color Class Driver | |
| Xerox® Phaser 6280 Color Printer | | ● | ● | Xerox® PS Color Class Driver | No Windows 10 Support |
| Xerox® Phaser 6300 Color Printer | | | ● | Xerox® PS Color Class Driver | |
| Xerox® Phaser 6350 Color Printer | | | ● | Xerox® PS Color Class Driver | |
| Xerox® Phaser 6360 Color Printer | | | ● | Xerox® PS Color Class Driver | |
| Xerox® Phaser 6500 Color Printer | ● ¹ | ● | | Xerox® PS Color Class Driver | |
| Xerox® Phaser 6600 Color Printer | ● | ● | ● | Xerox® PS Color Class Driver | |
| Xerox® Phaser 6700 Color Printer | ● | ● | ● | Xerox® PS Color Class Driver | |
| Xerox® Phaser 7100 Color Printer | | ● | ● | Xerox® Office PS Color Class Driver | |
| Xerox® Phaser 7400 Color Printer | | | ● | Xerox® PS Color Class Driver | |
| Xerox® Phaser 7500 Color Printer | ● | ● | ● | Xerox® PS Color Class Driver | |

¹Driver compatibility currently undergoing evaluation. Please use the Windows 8 driver in the interim until compatibility is confirmed.

| Product | Version 4 Drivers | Version 3 Drivers | Xerox® Global Print Driver® | Class Driver | Additional Information |
|--|-------------------|-------------------|-----------------------------|-------------------------------------|-------------------------|
| Xerox® Printers and Multifunction Printers—Continued | | | | | |
| Xerox® Phaser 7750 Color Printer | | | ● | Xerox® PS Color Class Driver | |
| Xerox® Phaser 7760 Color Printer | | | ● | Xerox® PS Color Class Driver | |
| Xerox® Phaser 7800 Color Printer | ● | ● | ● | Xerox® PS Color Class Driver | |
| Xerox® Phaser 8400 Color Printer | | | ● | Xerox® PS Color Class Driver | |
| Xerox® Phaser 8500 Color Printer | | | ● | Xerox® PS Color Class Driver | |
| Xerox® Phaser 8550 Color Printer | | | ● | Xerox® PS Color Class Driver | |
| Xerox® Phaser 8560 Color Printer | ● | | ● | Xerox® PS Color Class Driver | |
| Xerox® Phaser 8560MFP Color Multifunction Printer | ● | | ● | Xerox® PS Color Class Driver | |
| Xerox® Phaser 8860 Color Printer/ | ● | | ● | Xerox® PS Color Class Driver | |
| Xerox® Phaser 8860MFP Color Multifunction Printer | ● | | ● | Xerox® PS Color Class Driver | |
| Xerox® WorkCentre® C2424 | | | ● | Xerox® PS Color Class Driver | |
| Xerox® WorkCentre M123/M128/M133 Multifunction Printer | | | | | No Windows 8/10 Support |
| Xerox® WorkCentre M20/M20i Multifunction Printer | ● ¹ | ● | | Xerox® PS Class Driver | |
| Xerox® WorkCentre M35/M45/M55 Multifunction Printer | | | ● | Xerox® Office PS Class Driver | |
| Xerox® WorkCentre M165/M175 Multifunction Printer | | | ● | Xerox® Office PS Class Driver | |
| Xerox® WorkCentre PE220 Multifunction Printer | | ● | | | |
| Xerox® WorkCentre® Pro 32/40 Multifunction Printer | | | ● | Xerox® Office PS Color Class Driver | |
| Xerox® WorkCentre Pro 35/45/55 Multifunction Printer | | | ● | Xerox® Office PS Class Driver | |

¹Driver compatibility currently undergoing evaluation. Please use the Windows 8 driver in the interim until compatibility is confirmed.

| Product | Version 4 Drivers | Version 3 Drivers | Xerox® Global Print Driver® | Class Driver | Additional Information |
|---|-------------------|-------------------|-----------------------------|-------------------------------------|-------------------------|
| Xerox® Printers and Multifunction Printers—Continued | | | | | |
| Xerox® WorkCentre Pro 65/75/90 Multifunction Printer | | | ● | Xerox® Office PS Class Driver | |
| Xerox® WorkCentre® Pro 123/128/133 Multifunction Printer | | | | | No Windows 8/10 Support |
| Xerox® WorkCentre Pro 165/175 Multifunction Printer | | | ● | Xerox® Office PS Class Driver | |
| Xerox® WorkCentre Pro 232/238/245/255/265/275 Multifunction Printer | | | ● | Xerox® Office PS Class Driver | |
| Xerox® WorkCentre Pro C2128/C2636/C3545 Color Multifunction Printer | | | ● | Xerox® Office PS Color Class Driver | |
| Xerox® WorkCentre 232/238/245/255/265/275 Multifunction Printer | | | ● | Xerox® Office PS Class Driver | |
| Xerox® WorkCentre 3025 Multifunction Printer | ● ¹ | ● | | | |
| Xerox® WorkCentre 3045 Multifunction Printer | ● ¹ | ● | | | |
| Xerox® WorkCentre 3119 Multifunction Printer | | ● | | | |
| Xerox® WorkCentre 3210/3220 Multifunction Printer | ● ¹ | ● | | Xerox® PCL6 Class Driver | |
| Xerox® WorkCentre 3215 Multifunction Printer | ● ¹ | ● | | | |
| Xerox® WorkCentre 3225 Multifunction Printer | ● ¹ | ● | | | |
| Xerox® WorkCentre 3315/3325 Multifunction Printer | ● ¹ | ● | ● | Xerox® PS Class Driver | |
| Xerox® WorkCentre 3550 Multifunction Printer | ● ¹ | ● | ● | Xerox® PS Class Driver | |
| Xerox® WorkCentre 3615 Multifunction Printer | ● ¹ | ● | ● | Xerox® Office PS Class Driver | |
| Xerox® WorkCentre 3655 Multifunction Printer | ● | ● | ● | Xerox® Office PS Class Driver | |
| Xerox® WorkCentre 3655i Multifunction Printer | ● | ● | ● | Xerox® Office PS Class Driver | |
| Xerox® WorkCentre 4150 Multifunction Printer | | | ● | Xerox® PS Class Driver | |
| Xerox® WorkCentre 4250 Multifunction Printer | | ● | ● | Xerox® PS Class Driver | |
| Xerox® WorkCentre 4260 Multifunction Printer | | ● | ● | Xerox® PS Class Driver | |
| Xerox® WorkCentre 4265 Multifunction Printer | ● | ● | ● | Xerox® Office PS Class Driver | |

¹Driver compatibility currently undergoing evaluation. Please use the Windows 8 driver in the interim until compatibility is confirmed.

| Product | Version 4 Drivers | Version 3 Drivers | Xerox® Global Print Driver® | Class Driver | Additional Information |
|---|-------------------|-------------------|-----------------------------|-------------------------------------|-------------------------|
| Xerox® WorkCentre 5016 Multifunction Printer | | | | | No Windows 8/10 Support |
| Xerox® Printers and Multifunction Printers—Continued | | | | | |
| Xerox® WorkCentre 5020 Multifunction Printer | | | | Xerox® PCL6 Class Driver | |
| Xerox® WorkCentre 5030/5050 Multifunction Printer | | | ● | Xerox® Office PS Class Driver | |
| Xerox® WorkCentre 5135/5150 Multifunction Printer | | | ● | Xerox® Office PS Class Driver | |
| Xerox® WorkCentre 5222/5225/5230 Multifunction Printer | | | ● | Xerox® Office PCL6 Class Driver | |
| Xerox® WorkCentre 5325/5330/5335 Multifunction Printer | ● | ● | ● | Xerox® Office PCL6 Class Driver | |
| Xerox® WorkCentre 5632/5638/5645/5655/5665/5675/5687 Multifunction Printer | ● | | ● | Xerox® Office PS Class Driver | |
| Xerox® WorkCentre® 5735/5740/5745/5755/5765/5775/5790 Multifunction Printer | ● | ● | ● | Xerox® Office PS Class Driver | |
| Xerox® WorkCentre 5845/5855/5865/5875/5890 Multifunction Printer | ● | ● | ● | Xerox® Office PS Class Driver | |
| Xerox® WorkCentre 5865i/5875i/5890i Multifunction Printer | ● | ● | ● | Xerox® Office PS Class Driver | |
| Xerox® WorkCentre 5945/5955 Multifunction Printer | ● | ● | ● | Xerox® Office XPS Class Driver | |
| Xerox® WorkCentre 5945i/5955i Multifunction Printer | ● | ● | ● | Xerox® Office XPS Class Driver | |
| Xerox® WorkCentre 6015 Color Multifunction Printer | ● ¹ | ● | | | |
| Xerox® WorkCentre 6025 Color Multifunction Printer | ● ¹ | ● | | | |
| Xerox® WorkCentre 6027 Color Multifunction Printer | ● ¹ | ● | | | |
| Xerox® WorkCentre 6400 Color Multifunction Printer | | | ● | Xerox® Office PS Color Class Driver | |
| Xerox® WorkCentre 6505 Color Multifunction Printer | ● ¹ | ● | | Xerox® PS Color Class Driver | |
| Xerox® WorkCentre 6605 Color Multifunction Printer | ● ¹ | ● | ● | Xerox® PS Color Class Driver | |

¹Driver compatibility currently undergoing evaluation. Please use the Windows 8 driver in the interim until compatibility is confirmed.

| Product | Version 4 Drivers | Version 3 Drivers | Xerox® Global Print Driver® | Class Driver | Additional Information |
|---|-------------------|-------------------|-----------------------------|---------------------------------------|-------------------------|
| Xerox® WorkCentre 6655 Color Multifunction Printer | ● | ● | ● | Xerox® Office PS Color Class Driver | |
| Xerox® WorkCentre 6655i Color Multifunction Printer | ● | ● | ● | Xerox® Office PS Color Class Driver | |
| Xerox® WorkCentre 7120/7125 Color Multifunction Printer | ● | ● | ● | Xerox® Office PCL6 Color Class Driver | |
| Xerox® WorkCentre 7132 Color Multifunction Printer | | | | | No Windows 8/10 Support |
| Xerox® Printers and Multifunction Printers—Continued | | | | | |
| Xerox® WorkCentre 7220/7225 Color Multifunction Printer | ● | ● | ● | Xerox® Office XPS Color Class Driver | |
| Xerox® WorkCentre 7220i/7225i Color Multifunction Printer | ● | ● | ● | Xerox® Office XPS Color Class Driver | |
| Xerox® WorkCentre 7228/7235/ 7245 Color Multifunction Printer | | | | | No Windows 8/10 Support |
| Xerox® WorkCentre 7232/7242 Color Multifunction Printer | | | ● | Xerox® Office PCL6 Color Class Driver | |
| Xerox® WorkCentre 7328/7335/7345/7346 Color Multifunction Printer Built-in Controller | ● | | ● | Xerox® Office PCL6 Color Class Driver | |
| EFI® Fiery® Controller | | ● | | | |
| Xerox® WorkCentre 7425/7428/7435 Color Multifunction Printer Built-in Controller | ● | | ● | Xerox® Office PCL6 Color Class Driver | |
| EFI Fiery Controller | | ● | | | |
| Xerox® WorkCentre 7525/7530/7535/7545/7556 Color Multifunction Printer Built-in Controller | ● | ● | ● | Xerox® Office XPS Color Class Driver | |
| EFI Fiery Controller | | ● | | | |
| Xerox® WorkCentre 7655/7665 Color Multifunction Printer (rev 1.0) | | | ● | Xerox® Office PS Color Class Driver | |
| Xerox® WorkCentre 7655/7665/7675 Color Multifunction Printer (rev 2.0) | | | ● | Xerox® Office PS Color Class Driver | |
| Xerox® WorkCentre 7755/7765/ 7775 Color Multifunction Printer Built-in Controller | | | ● | Xerox® Office PS Color Class Driver | |
| EFI Fiery Controller | | ● | | | |

¹Driver compatibility currently undergoing evaluation. Please use the Windows 8 driver in the interim until compatibility is confirmed.

| Product | Version 4 Drivers | Version 3 Drivers | Xerox® Global Print Driver® | Class Driver | Additional Information |
|--|-------------------|-------------------|-----------------------------|--------------------------------------|-------------------------|
| Xerox® WorkCentre 7830/7835/7845/7855 | ● | ● | ● | Xerox® Office XPS Color Class Driver | |
| EFI Fiery Controller | | ● | | | |
| Xerox® WorkCentre 7830i/7835i/7845i/7855i | ● | ● | ● | Xerox® Office XPS Color Class Driver | |
| EFI Fiery Controller | | ● | | | |
| Xerox® WorkCentre 7970 | ● | ● | ● | Xerox® Office XPS Color Class Driver | |
| Xerox® WorkCentre 7970i | ● | ● | ● | Xerox® Office XPS Color Class Driver | |
| EFI Fiery Controller | | ● | | | |
| iGen®/High Entry Production Color Products | | | | | |
| Xerox® Color 800i/1000i Presses | | | | | |
| Xerox® FreeFlow® Print Server | ● | ● | ● | Xerox® FFPS Color Class Driver | |
| Creo® CX Print Server | | | | | No Windows 8/10 Support |
| iGen®/High Entry Production Color Products—Continued | | | | | |
| Xerox® EX Print Server | | ● | | | |
| Xerox® Color 800/1000 Presses | | | | | |
| Xerox® FreeFlow® Print Server | ● | ● | ● | Xerox® FFPS Color Class Driver | |
| Xerox® EX Print Server | | ● | | | |
| Xerox® Color 8250 Production Printer | | | | | |
| Xerox® FreeFlow Print Server | | ● | ● | Xerox® FFPS Color Class Driver | |
| Xerox® DocuColor® 2045/2060 | | | | | |
| Xerox® DocuSP® 2000XC | | | | | No Windows 8/10 Support |
| Creo CSX2000/CXP5000/CXP6000 | | | | | No Windows 8/10 Support |
| Fiery® EX2000/EX2000D | | | | | No Windows 8/10 Support |
| NPS/IPS | | | | | No Windows 8/10 Support |
| Xerox® DocuColor 3535 | | | | | |
| Built-in Fiery Controller | | | | | No Windows 8/10 Support |

*Driver compatibility currently undergoing evaluation. Please use the Windows 8 driver in the interim until compatibility is confirmed.

| Product | Version 4 Drivers | Version 3 Drivers | Xerox® Global Print Driver® | Class Driver | Additional Information |
|--|-------------------|-------------------|-----------------------------|--------------------------------|-------------------------|
| Creo Spire CXP3535 | | | | | No Windows 8/10 Support |
| Fiery EX3535 | | | | | No Windows 8/10 Support |
| EFI Splash® G3535 | | | | | No Windows 8/10 Support |
| Xerox® DocuColor 5000/5000AP Digital Press | | | | | |
| Xerox® DocuSP DSP5000 | | | ● | Xerox® FFPS Color Class Driver | |
| Creo CXP50 | | | | | No Windows 8/10 Support |
| EFI Splash RPX-ii | | | | | No Windows 8/10 Support |
| Fiery EXP50 | | ● | | | |
| Xerox® DocuColor 5252 Digital Color Press | | | | | |
| Xerox® FreeFlow Print Server | ● | ● | ● | | |
| Fiery EX2000D/EXP5000 | | | | | No Windows 8/10 Support |
| iGen®/High Entry Production Color Products—Continued | | | | | |
| Creo CXP5000/CXP6000 | | | | | No Windows 8/10 Support |
| Xerox® DocuColor 6060 Digital Color Press | | | | | |
| Xerox® DocuSP 6000XC/DSP6000 | | | | | No Windows 8/10 Support |
| Creo CXP6000 | | | | | No Windows 8/10 Support |
| Fiery EXP6000 | | | | | No Windows 8/10 Support |
| NPS/IPS | | | | | No Windows 8/10 Support |
| Xerox® DocuColor 7000/8000 Digital Press | | | | | |
| Xerox® FreeFlow® Print Server and DocuSP | | ● | ● | Xerox® FFPS Color Class Driver | |
| Creo CXP8000 | | | | | No Windows 8/10 Support |
| Fiery EXP8000 | | | | | No Windows 8/10 Support |
| Xerox® DocuColor 7000AP/8000AP Digital Press | | | | | |

¹Driver compatibility currently undergoing evaluation. Please use the Windows 8 driver in the interim until compatibility is confirmed.

| Product | Version 4 Drivers | Version 3 Drivers | Xerox® Global Print Driver® | Class Driver | Additional Information |
|--|-------------------|-------------------|-----------------------------|--------------------------------|-------------------------|
| Xerox® FreeFlow Print Server | | ● | ● | Xerox® FFPS Color Class Driver | |
| Xerox® CX Print Server | | | | | No Windows 8/10 Support |
| Xerox® EX Print Server | | ● | | | |
| Xerox® DocuColor 7002/8002 Digital Press | | | | | |
| Xerox® FreeFlow Print Server | | ● | ● | Xerox® FFPS Color Class Driver | |
| Xerox® CX Print Server | | | | | No Windows 8/10 Support |
| Xerox® EX Print Server | | ● | | | |
| Xerox® DocuColor 8080 | | | | | |
| Xerox® FreeFlow Print Server | | ● | ● | Xerox® FFPS Color Class Driver | |
| Creo® CX Print Server | | | | | No Windows 8/10 Support |
| Xerox® EX Print Server | | ● | | | |
| iGen®/High Entry Production Color Products—Continued | | | | | |
| Xerox® iGen3® | | | | | |
| Xerox® DocuSP® for iGen® and Xerox FreeFlow Print Server | | ● | ● | Xerox® FFPS Color Class Driver | |
| Creo Spire for iGen | | | | | No Windows 8/10 Support |
| EFI® Fiery® for iGen | | ● | | | |
| Xerox® iGen4® | | | | | |
| Xerox® FreeFlow® Print Server | | ● | ● | Xerox® FFPS Color Class Driver | |
| Creo Spire for iGen | | | | | No Windows 8/10 Support |
| EFI Fiery for iGen | | ● | | | |
| Xerox® iGen5® | | | | | |
| EFI Fiery for iGen | | ● | | | |
| Xerox® iGen 150 | | | | | |
| Xerox® FreeFlow® Print Server | | ● | ● | Xerox® FFPS Color Class Driver | |
| Xerox® EX Print Server, Powered by Fiery | | ● | | | |

¹Driver compatibility currently undergoing evaluation. Please use the Windows 8 driver in the interim until compatibility is confirmed.

| Product | Version 4 Drivers | Version 3 Drivers | Xerox® Global Print Driver® | Class Driver | Additional Information |
|---|-------------------|-------------------|-----------------------------|---------------------------------------|-------------------------|
| Xerox® Versant™ 80 Press | | | | | |
| Xerox® FreeFlow® Print Server | | ● | | Xerox® FFPS Color Class Driver | |
| Xerox® EX-80 Print Server Powered by Fiery® | | ● | | | |
| Xerox® EX-80i Integrated Controller | | ● | | | |
| Xerox® Versant™ 2100 Press | | | | | |
| Xerox® FreeFlow® Print Server | ● | ● | ● | Xerox® FFPS Color Class Driver | |
| Xerox® EX/EX-P 2100 Print Server Powered by Fiery® | | ● | | | |
| Low/Mid Entry Production Color Products | | | | | |
| Xerox® Color C60/C70 Printer Built-in Controller | ● | ● | ● | | |
| Xerox® FreeFlow Print Server | ● | ● | ● | Xerox® Office PCL6 Color Class Driver | |
| Integrated Fiery Color Server | | ● | | | |
| Low/Mid Entry Production Color Products--Continued | | | | | |
| Xerox® EX Print Server | | ● | | | |
| Xerox® Color C75 Press | | | | | |
| Xerox® FreeFlow Print Server | ● | ● | ● | | |
| Integrated Fiery Controller | | ● | | | |
| Xerox® EX Print Server | | ● | | | |
| Xerox® Color J75 Press | | | | | |
| Xerox® FreeFlow Print Server | | ● | ● | | |
| Xerox® EX Print Server | | ● | | | |
| Xerox® Color 550/560/570 Printer Built-in Controller | ● | ● | ● | Xerox® Office PCL6 Color Class Driver | |
| Xerox® FreeFlow Print Server | | ● | ● | Xerox® FFPS Color Class Driver | |
| Integrated Fiery Color Server | | ● | | | |
| Xerox® CX Print Server (powered by Creo) | | | | | No Windows 8/10 Support |
| Xerox® EX Print Server (powered by Fiery) | | ● | | | |

¹Driver compatibility currently undergoing evaluation. Please use the Windows 8 driver in the interim until compatibility is confirmed.

| Product | Version 4 Drivers | Version 3 Drivers | Xerox® Global Print Driver® | Class Driver | Additional Information |
|--|-------------------|-------------------|-----------------------------|--------------------------------|-------------------------|
| Xerox® 700/700i Digital Color Press | | | | | |
| Xerox® FreeFlow Print Server | | | ● | | |
| EFI Splash® RPX-iii | | | | | No Windows 8/10 Support |
| Integrated Fiery Color Server | | ● | | | |
| Xerox® CX Print Server (powered by Creo) | | | | | No Windows 8/10 Support |
| Xerox® EX Print Server (powered by Fiery) | | ● | | | |
| Xerox® 770 Digital Color Press | | | | | |
| Xerox® FreeFlow Print Server | | ● | ● | Xerox® FFPS Color Class Driver | |
| Xerox® EX Print Server (powered by Fiery®) | | ● | | | |
| Xerox® DocuColor® 12 | | | | | |
| Fiery® EX12/X12/X12e/XP12 | | | | | No Windows 8/10 Support |
| Matchprint™ Professional Server | | | | | No Windows 8/10 Support |
| Low/Mid Entry Production Color Products--Continued | | | | | |
| EFI® Splash® G610/G620/G630/G640 | | | | | No Windows 8/10 Support |
| Xerox® DocuColor 1632/2240 | | | | | No Windows 8/10 Support |
| Xerox® DocuColor 240/250 | | | | | |
| Xerox® FreeFlow® DXP250 | | | ● | | |
| Built-in Fiery Controller | | | | | No Windows 8/10 Support |
| Creo® Spire CX250 | | | | | No Windows 8/10 Support |
| EFI Fiery EXP250 | | | | | No Windows 8/10 Support |
| EFI Splash RPX-i/RPX-ii | | | | | No Windows 8/10 Support |
| Xerox® DocuColor 242/252/260 | | | | | |
| Xerox® FreeFlow DXP260 | | | ● | Xerox® FFPS Color Class Driver | |
| Integrated Fiery Controller | | ● | | | |
| Creo Spire CX260 | | | | | No Windows 8/10 Support |

¹Driver compatibility currently undergoing evaluation. Please use the Windows 8 driver in the interim until compatibility is confirmed.

| Product | Version 4 Drivers | Version 3 Drivers | Xerox® Global Print Driver® | Class Driver | Additional Information |
|---|-------------------|-------------------|-----------------------------|--------------------------------|-------------------------|
| EFI Fiery EX260 | | ● | | | |
| EFI Splash RPX-ii | | | | | No Windows 8/10 Support |
| Monochrome High End Cut Sheet Products | | | | | |
| Xerox® DocuPrint® 75 MX | | | | | |
| Xerox® DocuSP Print Server | | | | | No Windows 8 Support |
| Xerox® DocuPrint 2000 Series 100/100MX/115/115MX/135/135MX/155/155MX/180/180 MX Enterprise Printing System | | | | | |
| Xerox® DocuSP® Print Server | | | ● | Xerox® FFPS Class Driver | |
| Xerox® DocuTech® 128/155/180 HighLight Color System | | | ● | Xerox® FFPS Color Class Driver | |
| Xerox® FreeFlow® Print Server and DocuSP | | | | | |
| Xerox® DocuTech 128/155/180 HighLight Color System Publisher | | | ● | Xerox® FFPS Color Class Driver | |
| Xerox® DocuSP Print Server | | | | | |
| Monochrome High End Cut Sheet Products--Continued | | | | | |
| Xerox® DocuTech 6100/6115/6135/6155/6180 Production Publisher Xerox® FreeFlow Print Server and DocuSP | | | ● | Xerox® FFPS Class Driver | |
| Xerox Nuvera® 200/288 MX Digital Production System | ● | ● | ● | Xerox® FFPS Class Driver | |
| Xerox Nuvera 100/120 Digital Copier/Printer Xerox® DocuSP Print Server | ● | ● | ● | Xerox® FFPS Class Driver | |
| Xerox Nuvera 100/120/144 Digital Production System Xerox® DocuSP Print Server | ● | ● | ● | Xerox® FFPS Class Driver | |
| Xerox Nuvera 100MX/120MX/144MX Digital Production System Xerox® DocuSP Print Server | ● | ● | ● | Xerox® FFPS Class Driver | |
| Xerox Nuvera 200/288/314 EA Digital Perfecting System Xerox® FreeFlow Print Server and DocuSP | ● | ● | ● | Xerox® FFPS Class Driver | |
| Xerox Nuvera EA Digital Production System | ● | ● | ● | Xerox® FFPS Class Driver | |

*Driver compatibility currently undergoing evaluation. Please use the Windows 8 driver in the interim until compatibility is confirmed.

| Product | Version 4 Drivers | Version 3 Drivers | Xerox® Global Print Driver® | Class Driver | Additional Information |
|--|-------------------|-------------------|-----------------------------|---------------------------------|-------------------------|
| Xerox® FreeFlow Print Server | | | | | |
| Monochrome Light Production Products | | | | | |
| Xerox® 4110 Copier/Printer | | | | | |
| DocuSP Print Server | | | ● | Xerox® FFPS Class Driver | |
| EFI® EXP4110 | | | | | No Windows 8/10 Support |
| Integrated Copy/Print Server | | | | | No Windows 8/10 Support |
| Xerox® 4110/4590/4595 Enterprise Printing System Xerox® DocuSP Print Server | | | ● | Xerox® FFPS Class Driver | |
| Xerox® 4112/4127 Copier/Printer Xerox® FreeFlow Print Server | | | | Xerox® FFPS Class Driver | |
| Integrated Copy/Print Server | | | ● | | No Windows 8/10 Support |
| Xerox® EX Print Server (powered by Fiery®) | | ● | | | |
| Xerox® 4590 Copier/Printer Xerox® DocuSP Print Server | | | ● | Xerox® FFPS Class Driver | |
| Monochrome Light Production Products--Continued | | | | | |
| Xerox® 4595 Copier/Printer | | | | | |
| Xerox® FreeFlow Print Server and DocuSP | | | ● | Xerox® FFPS Class Driver | |
| Integrated Copy/Print Server | | | | | No Windows 8/10 Support |
| Xerox® D95/D95A/D110/D125 Copier/Printer and Printer | | | | | |
| Xerox® FreeFlow Print Server | | ● | ● | | |
| Built-in Controller | ● | ● | ● | Xerox® Office PCL6 Class Driver | |
| Xerox® EX Print Server (powered by Fiery) | | ● | | | |
| Xerox® D136 Copier/Printer and Printer Built-in Controller | ● | ● | ● | Xerox® Office PCL6 Class Driver | |
| Xerox® FreeFlow Print Server | | ● | ● | | |
| Xerox® EX Print Server (powered by Fiery) | | ● | | | |

¹Driver compatibility currently undergoing evaluation. Please use the Windows 8 driver in the interim until compatibility is confirmed.

| Product | Version 4 Drivers | Version 3 Drivers | Xerox® Global Print Driver® | Class Driver | Additional Information |
|---|-------------------|-------------------|-----------------------------|--------------------------|-------------------------|
| Continuous Feed Products | | | | | |
| Xerox® DocuPrint® 350/500 CF Xerox® DocuSP® Print Server | | | ● | Xerox® FFPS Class Driver | |
| Xerox® DocuPrint 425/850 Xerox® DocuSP Print Server | | | ● | Xerox® FFPS Class Driver | |
| Xerox® DocuPrint 525 Xerox® DocuSP Print Server | | | ● | Xerox® FFPS Class Driver | |
| Xerox® DocuPrint 700/1000 CFD Xerox® DocuSP Print Server | | | ● | Xerox® FFPS Class Driver | |
| Xerox® DocuPrint 1050 Xerox® DocuSP Print Server | | | ● | Xerox® FFPS Class Driver | |
| Xerox® 495 Continuous Feed Xerox® DocuSP Print Server | | | ● | Xerox® FFPS Class Driver | |
| Xerox® 650/1300 Continuous Feed Xerox® DocuSP Print Server | | | ● | Xerox® FFPS Class Driver | |
| Wide Format Products | | | | | |
| Xerox® Wide Format IJP 2000 | | ● | | | |
| Xerox® 510 Print System Xerox® FreeFlow® AccXES Controller (serial number HFT) | | | | | No Windows 8/10 Support |
| Xerox® FreeFlow AccXES Controller (serial number YKE) | | | | | No Windows 8/10 Support |
| Xerox® 721 Print System Xerox® FreeFlow AccXES Controller (serial number HFT) | | | | | No Windows 8/10 Support |
| Xerox® FreeFlow AccXES Controller (serial number YKE) | | | | | No Windows 8/10 Support |
| Xerox® 6030 Xerox® FreeFlow AccXES Controller | | | | | No Windows 8/10 Support |
| Xerox® 6050 Xerox® FreeFlow AccXES Controller | | | | | No Windows 8/10 Support |

¹Driver compatibility currently undergoing evaluation. Please use the Windows 8 driver in the interim until compatibility is confirmed.

| Product | Version 4 Drivers | Version 3 Drivers | Xerox® Global Print Driver® | Class Driver | Additional Information |
|---|-------------------|-------------------|-----------------------------|--------------|-------------------------|
| Xerox® 6050A Xerox® FreeFlow AccXES Controller | | | | | No Windows 8/10 Support |
| Xerox® 6204 Xerox® FreeFlow AccXES Controller | | | | | No Windows 8/10 Support |
| Xerox® 6279 Wide Format Xerox® FreeFlow AccXES Controller | | | | | No Windows 8/10 Support |
| Xerox® 6604/6605 Wide Format Xerox® FreeFlow AccXES Controller | | | | | No Windows 8/10 Support |

¹Driver compatibility currently undergoing evaluation. Please use the Windows 8 driver in the interim until compatibility is confirmed.

What was new in Windows® 8.x?

New types of print drivers.

Windows 8 and 8.1 bridge into the world of mobile devices and introduces many new concepts and new ways to print. The new choices and the different ways print drivers now function in classic, legacy Desktop programs and cutting-edge Modern UI apps can be overwhelming and a bit confusing.

While printing from Desktop programs remains a familiar experience, Modern UI apps create new ways of working with Windows and new printing workflows. Microsoft's introduction of a new type of driver, known as the Class Driver, offers a new method of printing with a simpler set of features. With all of these changes, deciding which print driver to use and understanding how the driver works can be difficult. The table below describes each type of print driver and explains the different behaviors to expect.

| Driver Type | Printing from Desktop Programs (Microsoft Office) | Printing from a Modern UI App (Internet Explorer®, PDF Viewer) |
|-----------------------------|---|---|
| Version 4 Drivers | Today, V4 drivers have evolved to include the majority of the V3 printing features. When working with advanced printing features, you may want to consider using V3 drivers for printing from Desktop programs, like Microsoft Office applications. | |
| Version 3 Drivers | | Microsoft introduced v4 drivers with Windows 8 to offer a print driver that would function well in both the Desktop and Modern UI environments. V4 drivers offer the best printing experience for Windows 8/10 from Modern UI apps. These drivers provide access to the most features via the Xerox Print Experience app that can be downloaded from the Windows Store. |
| Xerox® Global Print Driver® | Introduced with Windows 2000, printing with V3 drivers from Desktop applications remains the same as the Windows 7 print experience. | Modern UI apps allow for printing using V3 drivers. The feature set available when printing from a Modern UI app is condensed to maximize use from Windows 8/10 touch-enabled devices. |

—Continued

| | | |
|---------------------|---|---|
| Class Driver | <p>Class drivers are included with Windows 8.x/10 and Windows RT tablets as a part of the operating system. Because they are immediately available and don't require downloading, class drivers can offer a quick and convenient install experience.</p> <p>Class drivers are available for many newer Xerox® printers and MFPs that offer PS, PCL6 and/or XPS printing capabilities. These drivers offer a basic feature set and the user experience resembles very simple drivers that do not have a customized UI.</p> | <p>Class drivers are included with Windows 8.x/10 and Windows RT tablets as a part of the operating system. Because they are immediately available and don't require downloading, class drivers can offer a quick and convenient install experience. In many cases, the install is so fast you may not even realize that you just installed a print driver. The features offered by the class driver stay the same when printing from Desktop programs or Modern UI apps.</p> |
|---------------------|---|---|

How to obtain print drivers.

To access many of the Windows 8/10 print driver types for your products, visit www.xerox.com/drivers. Search using the name of your product, and select the Drivers & Downloads link from the resulting page. Some print drivers, like the class drivers, can only be obtained through the operating system. Microsoft does not allow us to update existing class drivers or add new class drivers to the operating system and we cannot distribute these drivers from www.xerox.com/drivers. For more information about how this affects Windows RT users, see the section below titled, "Printing in Windows RT". The next table lists each type of print driver and the options available for finding the drivers you need.

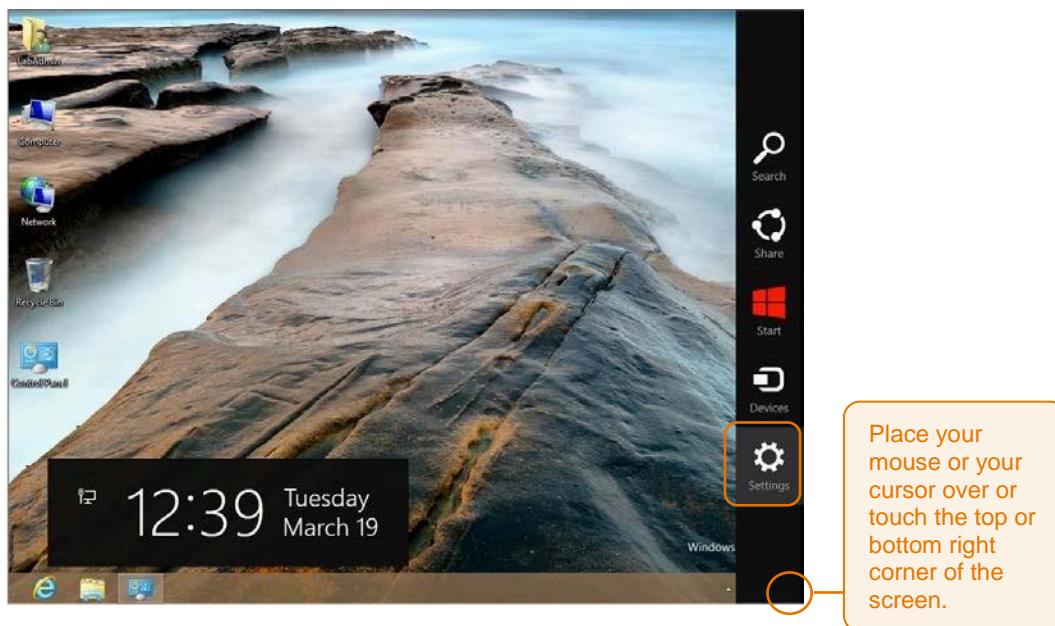
| | | |
|------------------------------------|---|--|
| Driver Type | Printing from Desktop Programs (Microsoft Office) | Printing from a Modern UI App (Internet Explorer®, PDF Viewer) |
| Version 4 Drivers | The Xerox Print Experience app, the companion to the V4 driver, is available for download from the Windows Store. | Some of our newest printers and MFPs now have v4 drivers available with support for more products planned over time. |
| Version 3 Drivers | Not Applicable | You can find updated Windows 8/10 drivers for many Xerox® printers and MFPs at the Support & Drivers site at www.xerox.com/drivers . |
| Xerox® Global Print Driver® | Not Applicable | You can find an updated version of the Xerox® Global Print Driver that offers support for Windows 8/10 at the Support & Drivers site at www.xerox.com/drivers . |
| Class Driver | Not Applicable | Not Applicable |

How to install the new types of print drivers.

Windows 8/10 offer two methods of performing print driver installations. When printing from a Modern UI app, an automatic installation of a suitable class driver occurs when you select one of the printers Windows 8/10 automatically detects. If Windows 8/10 does not automatically discover your printers, cannot find a matching class driver for your printer, or if you prefer a driver that offers more features, you can choose to install print drivers from within the Desktop. This section describes the steps for installing print drivers from the Desktop.

How to Install a Class Driver

1. In Windows 8/10, open the Desktop, touch the top or bottom right corner to open the Charms bar, select Settings and select the Control Panel. In Windows 10, right-click the Start button and select the Control Panel.

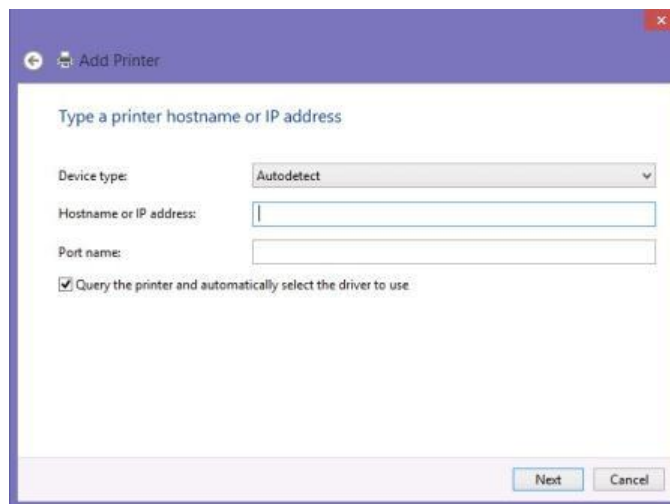


2. Select Devices and Printers.
3. Select “Add a printer.”
4. If the printer you would like to install appears in the list of available printers, select that printer from the list. Otherwise, select “The Printer that I want isn’t listed.”
5. From the “Find a printer by other options” screen, select the “Add a printer using a TCP/IP address or hostname” option and select “Next.”

Note: If you have been given other directions to follow by your IT administrator, select the choice that best matches your network configuration. The remaining steps assume that the installation will use a TCP/IP address.

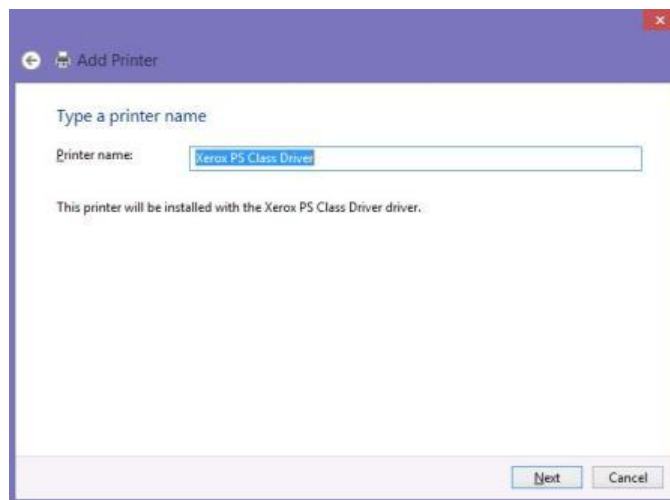
Helpful Tip: The configuration report printed during the printer’s power on cycle typically displays the TCP/IP address. Check the user guide for your printer for more information about how to access the configuration report.

6. At the “Type a printer hostname or IP address” screen, enter the IP address of your printer and make sure that the checkbox next to “Query the printer and automatically select the driver to use” remains checked, as illustrated below. Select “Next.”



The screenshot shows the 'Add Printer' window with the title 'Add Printer'. The main heading is 'Type a printer hostname or IP address'. Below this, there are three input fields: 'Device type:' with a dropdown menu set to 'Autodetect', 'Hostname or IP address:' with an empty text box, and 'Port name:' with an empty text box. A checkbox labeled 'Query the printer and automatically select the driver to use' is checked. At the bottom right, there are 'Next' and 'Cancel' buttons.

7. Now, Windows 8/10 will search for a class driver that matches the printer you have chosen. When Windows has found the best class driver to use with your printer, you will see a screen like the one below that describes the selected class driver. At this point, we highly suggest that you change the printer name to something that will be meaningful and help you know which printer you are using. After you have finished typing the new name, select “Next.”



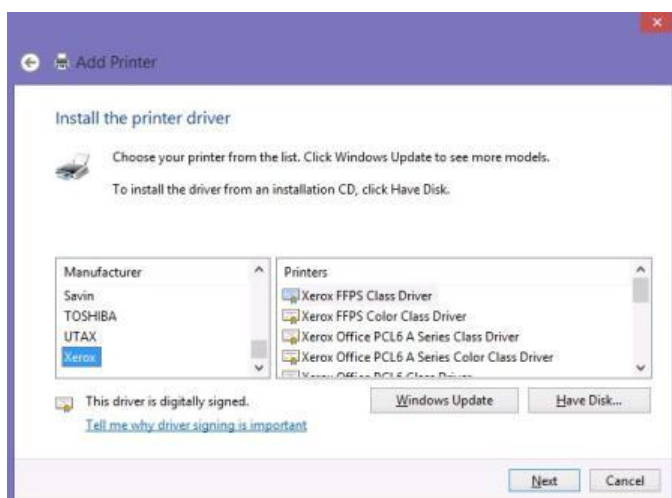
The screenshot shows the 'Add Printer' window with the title 'Add Printer'. The main heading is 'Type a printer name'. Below this, there is a 'Printer name:' label followed by a text box containing 'Xerox PS Class Driver'. Below the text box, it says 'This printer will be installed with the Xerox PS Class Driver driver.' At the bottom right, there are 'Next' and 'Cancel' buttons.

8. At the Printer Sharing screen, you can choose whether to share this printer with others on your network. Make your choices and select “Next.”

You have now completed the installation process! You may choose to Print a Test Page to make sure you can print to the printer or you may choose to select “Finish” and exit out of the install wizard.

Helpful Tip: In some network environments, you may observe a lengthy delay before your newly installed printer appears in the list of Devices and Printers. This is a result of background processes and does not mean that your printer has stopped functioning. Your printer is available for printing even when it is not displayed in the list of Devices and Printers.

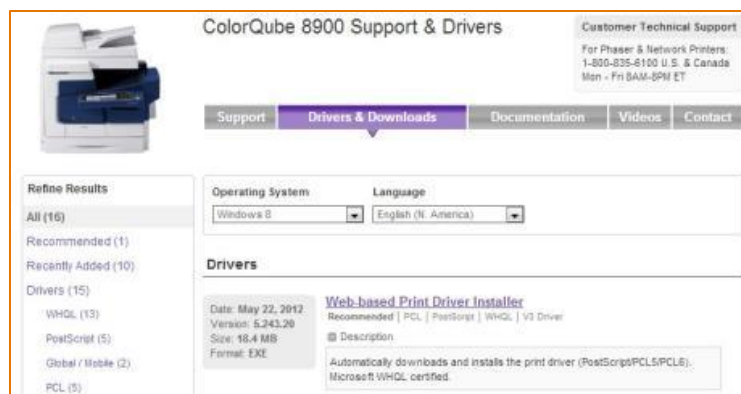
Helpful Tip: In some cases, Windows cannot determine the best class driver for your printer. When that happens, you will see a screen like the one below after entering your IP address. This screen lets you select the class driver to use with your printer. Select “Xerox” from the list of manufacturers and select the class driver option that matches the class driver listed for your printer in the compatibility table at the beginning of this document.



How to Install a Version 3 Driver

To start the V3 driver installation process, first download the driver for your printer from www.xerox.com/drivers. When choosing from the printer driver packages available for your printer, if a Web-based installer package is available that option is recommended since it will greatly simplify the install process.

Example of Web-based Print Driver Installer for the Xerox® ColorQube® 8900



These installation steps assume the use of the Add Printer Wizard package (usually a self-extracting .zip file that is labeled “PS Driver – Microsoft Certified,” or similar).



1. Open the Desktop, open Internet Explorer® and navigate to www.xerox.com/drivers.
2. Search using the name of your printer and select the Drivers & Downloads link from the resulting page. Select the link for the driver package and respond to the choices below the End User License Agreement. After you click “Accept”, you will see the option to “Run” or “Save”. Select “Run.”

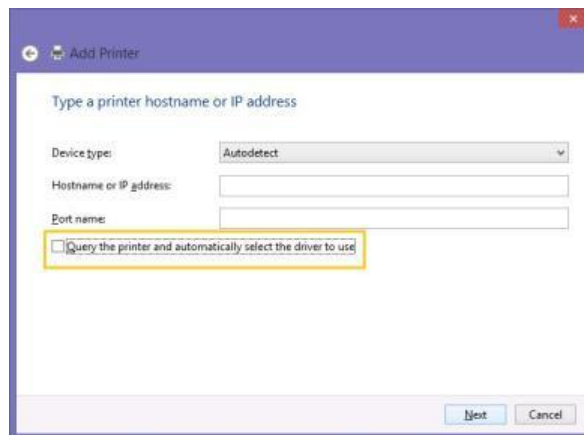
Helpful Tip: If you plan to finish the driver install at a later time, you may choose to “Save” the file and open the file later when you wish to resume the installation process.

3. After the download completes, the Xerox software installer will open and will present you with the option of extracting the driver files to a new location. You may either use the default location suggested by the installer or browse to a new location. After you have made your choice, select “Install”.
4. If the printer you would like to install appears in the list of available printers, select that printer from the list. Otherwise, select “The Printer that I want isn’t listed”.
5. From the “Find a printer by other options” screen, select the “Add a printer using a TCP/IP address or hostname” option and select “Next”.

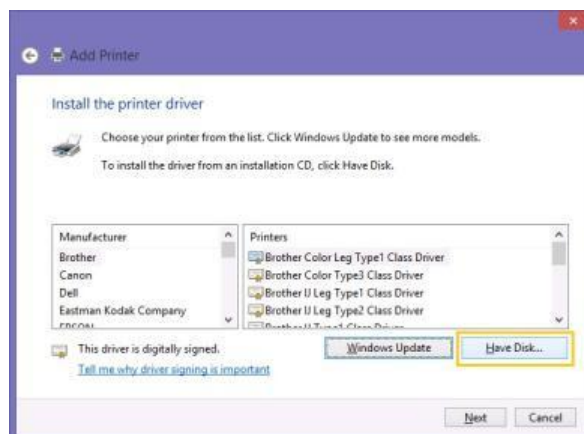
Note: If you have been given other directions to follow by your IT administrator, select the choice that best matches your network configuration. The remaining steps assume that the installation will use a TCP/IP address.

Helpful Tip: The configuration report printed during the printer's power on cycle typically displays the TCP/IP address. Check the user guide for your printer for more information about how to access the configuration report.

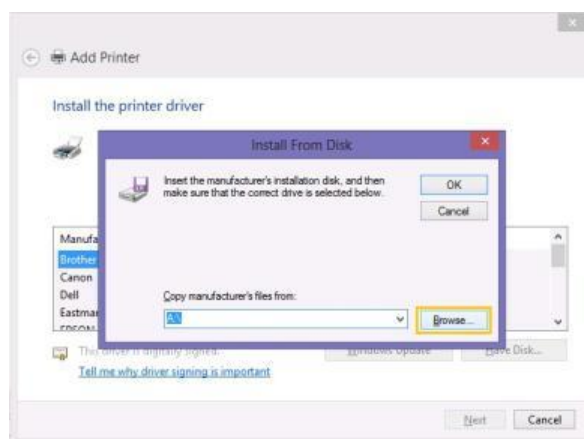
6. At the “Type a printer hostname or IP address” screen, enter the IP address of your printer and make sure to remove the checkmark in the checkbox next to “Query the printer and automatically select the driver to use” as illustrated below. Select “Next.”



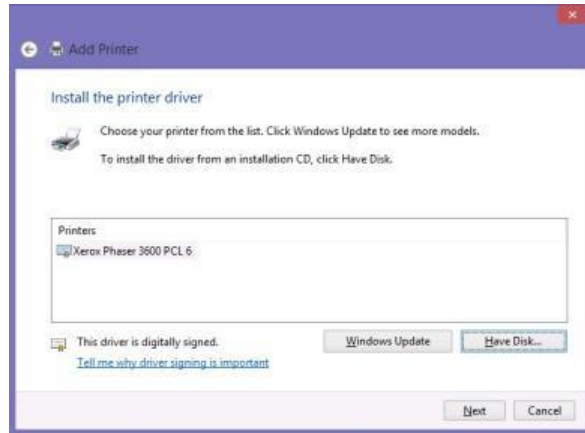
7. At the “Install the printer driver” screen, select “Have Disk.”



8. Select the “Browse...” button.



9. Select the .inf file from the list of files and select “Open.” Then, select “OK” at the “Install From Disk” window.
10. The “Install the printer driver” screen should now be updated to display the model of your printer. Select “Next.”



11. You may now choose to select a new name for your printer or keep the model name that displays in the “Type a printer name” screen. Make your choice and select “Next.”
12. If User Account Control is enabled for your installation of Windows 8/10, you may be required to enter an administrator password to proceed with the install. If prompted, enter the administrator password and choose “Yes.”
13. At the Printer Sharing screen, you can choose whether to share this printer with others on your network. Make your choices and select “Next.”
14. You have now completed the installation process! You may choose to “Print a Test Page” to make sure you can print to the printer or you may choose to select “Finish” and exit out of the install wizard.

Helpful Tip: In some network environments, you may observe a lengthy delay before your newly installed printer appears in the list of Devices and Printers. This is a result of background processes and does not mean that your printer has stopped functioning. Your printer is available for printing even when it is not displayed in the list of Devices and Printers.

Helpful Tip: In some cases, you may find the class driver for your product installed, instead of the V3 driver you selected. If that occurs, simply run through the installation steps again.

How to Install a Version 4 Driver

For the best install experience, we recommend using the print driver installer we have specially designed for installing V4 drivers and the accompanying Xerox Print Experience Desktop application. The Xerox Print Experience application provides you with a simple, easy to use interface that is quite similar to the look and feel of a V3 driver. Those who prefer access to advanced print driver installation options may choose to use the V4 print driver package we have created for administrators. The following steps assume the use of the V4 Print Driver Installer, which is available for PS, PCL, and XPS V4 drivers.

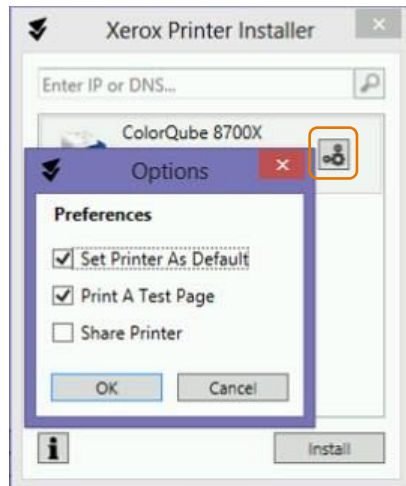
1. Open the Desktop, open Internet Explorer® and navigate to www.xerox.com/drivers.
2. Search using the name of your printer and select the Drivers & Downloads link from the resulting page. Select the link for the driver package and respond to the choices below the End User License Agreement. After you click "Accept", you will see the option to "Run" or "Save". Select "Run."

Helpful Tip: If you plan to finish the driver install at a later time, you may choose to "Save" the file and open the file later when you wish to resume the installation process.

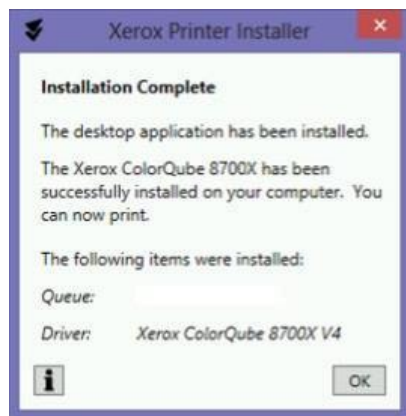
3. After the download completes, the Xerox software installer will open and will present you with the option of extracting the driver files to a new location. You may either use the default location suggested by the installer or browse to a new location. After you have made your choice, select "Install".
4. If you are prompted by the User Account Control feature to allow the Xerox Installer Application to make changes to your computer, choose "Yes" to continue with the installation process.
5. Next, the Xerox Printer Installer will display the End User License Agreement. If you agree to the terms and conditions of the license agreement, select "Agree" to continue with the installation process.

6. The Xerox Printer Installer will search your network to find your printer or MFP, if the printer or MFP you are attempting to install appears in the list of results, select that device from the list and select “Install”. Otherwise, you may need to enter the IP Address of the printer or MFP in order to proceed with installation.

Helpful Tip: You may customize the installation by selecting the Options button to the right of the selected printer or MFP. When you select the Options button, you will be presented with the following set of choices. Click in the checkbox(es) to make your choices and select “OK” when you have finished.



7. Once the installation process has completed, the Xerox Printer Installer will display a confirmation message similar to the one below.

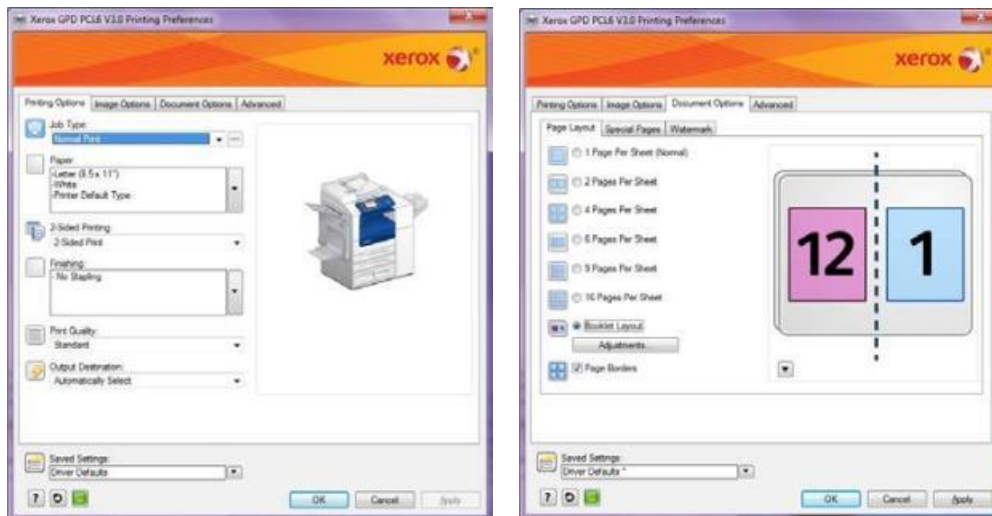


How to use the new types of print drivers.

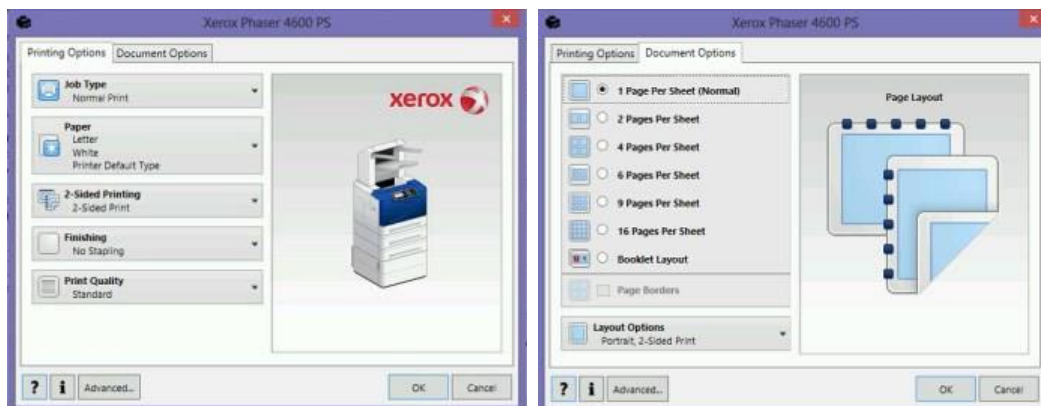
The print driver you select and the application you print from can dramatically alter your Windows 8/10 printing experience. Particularly when printing from Modern UI apps for the first time, you may be surprised by the bold, new printing screens. You may also have a few questions about which of your favorite printing features are still available. These next few sections describe common printing experiences in Windows 8/10. You will also find tables that list the features available when printing in different scenarios.

How to Print from a Windows® 8/10 Desktop App with a V3 or V4 Driver.

Printing with a V3 driver from a Windows 8/10 Desktop App closely resembles the print experience from Windows 7. Many updated Windows 8 V3 drivers now enjoy a refreshed appearance. While the design has been updated, the function of the driver has not changed. Simply select File, Print or use a keyboard shortcut, like CTRL + P to open the Print dialog. Then, select the Xerox® printer and select Properties to access the print driver options. Finally, select your choice of settings from the print driver options presented and select OK to return to the Print dialog. The following pictures show examples of some of the V3 print driver options you may encounter.



The user interface for V4 drivers has been designed to look very similar to the V3 drivers and the methods for accessing the print driver and making selections are identical.

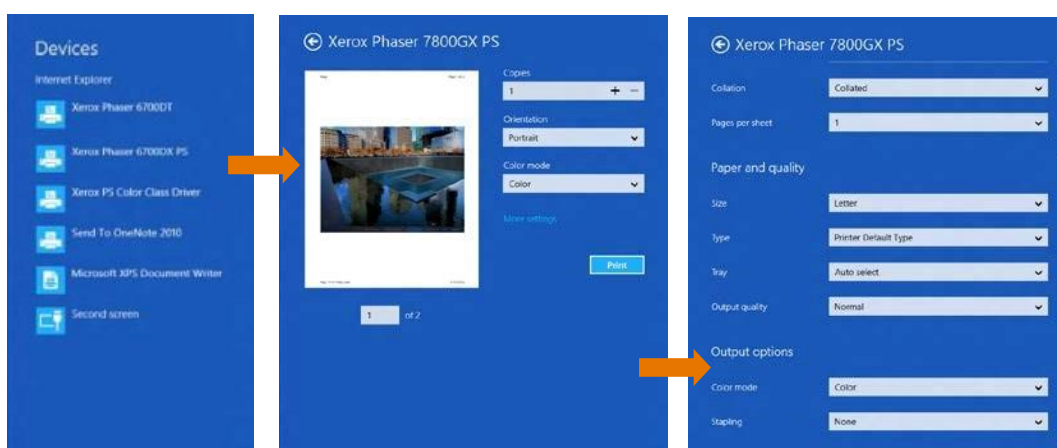


How to Print from a Windows® 8/10 Modern UI or Universal App with a V4 or V3 Driver.

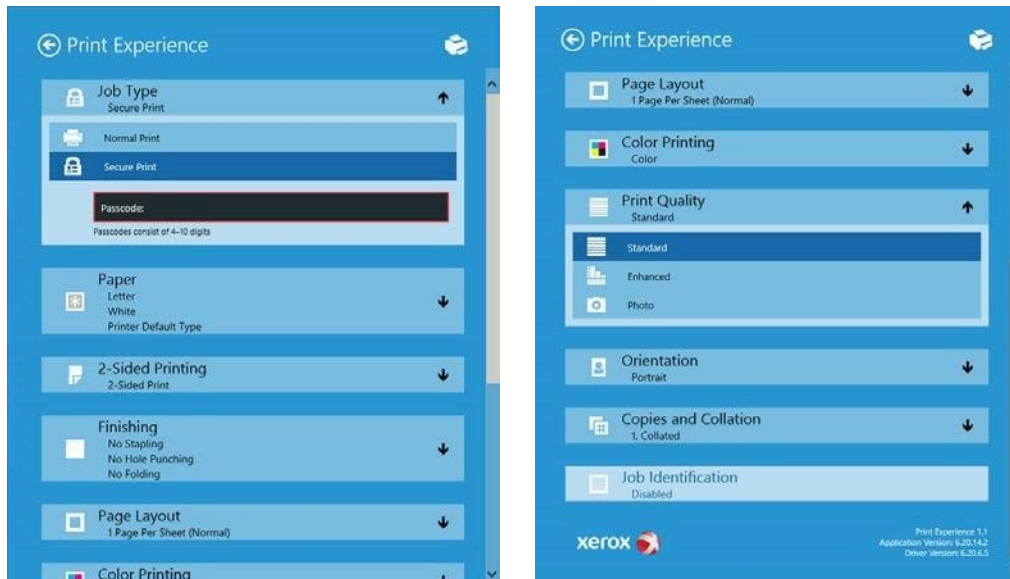
Printing from a Modern UI app differs significantly from the Desktop experience.

1. To start, open the app and press CTRL + P to print.
2. Select the Xerox® product-specific driver or the Xerox® Global Printer Driver®.
3. Select “More Settings” or “Print”.
4. Note that the V3 driver offers fewer printing options for Modern UI or Universal applications while the V4 driver provides a more extensive selection of features
5. Select the back arrow in Windows 8 or Print in Windows 10 to “Print”.

The following pictures provide examples of screens you would encounter when printing from a Windows 8 Modern UI app or a Windows 10 Universal app with a V3 driver.



When printing from a Windows 8 Modern UI app or a Windows 10 Universal app with a V4 driver, you will notice that several features appear after selecting “More Settings”.



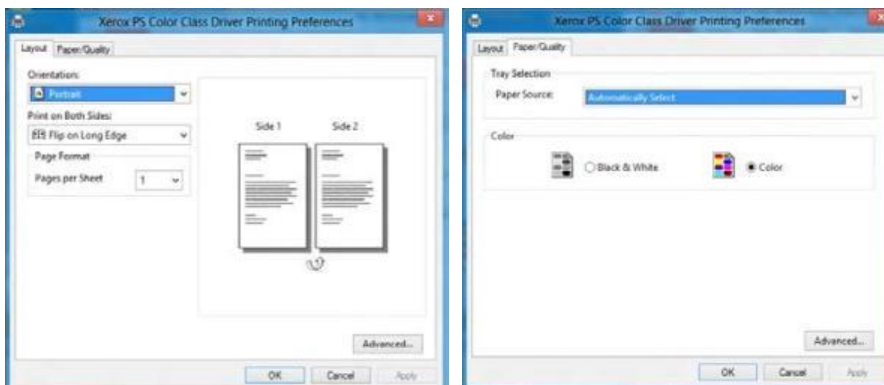
Helpful Tip: The richer feature set of the V4 drivers is revealed after installing the Xerox Print Experience app, which is available in the Windows Store.

| Version 3 Driver Features Available When Printing from Modern UI Apps | Version 3 Driver Features Not Available When Printing from Modern UI Apps |
|---|---|
| Duplex | Job Types (including Secure Print) |
| Copies | Xerox® Accounting |
| Collation | Watermarks |
| Color vs. Black & White | Booklet Printing |
| N-Up | Many Finishing Options (Some stapling choices are supported) |
| Orientation | |
| Media Size & Media Type Selections | |
| Paper Tray Options | |
| Print Quality | |

| Version 4 Driver: Features Available | Version 4 Driver: Features Not Available |
|--|--|
| Secure Print | |
| Media Size | |
| Media Type & Color | |
| Paper Tray Options | |
| Duplex | |
| Finishing Options | |
| Page Layout (including N-Up & Booklet) | |
| Color vs. Black and White | |
| Print Quality | |
| Orientation | |
| Copies & Collation | |
| Job Identification | |
| Xerox® Accounting | |
| Job Types (including Delay Print and Sample Job) | |
| Watermarks | |

How to print from a Windows® 8/10 Desktop App using a class driver.

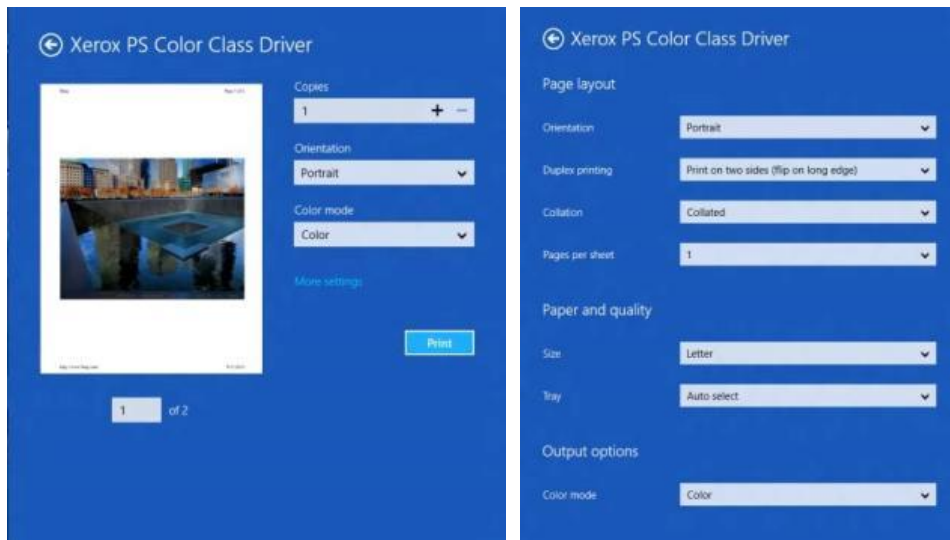
The steps to perform printing from a Windows 8/10 Desktop App when using a class driver are identical to the steps for a V3 driver. The feature set offered is the main difference between the two drivers. Class drivers offer very basic printing options in comparison to a V3 driver, as demonstrated by the pictures below.



How to print from a Windows® 8 Modern UI App or Windows 10 Universal App using a class driver.

1. To start, open the app select CTRL + P to print.
2. Select the Xerox® Class Driver.
3. Select “More Settings” or “Print.”
Note: The Class Driver offers very limited printing options.
4. Select Print in Windows 10 or the back arrow in Windows 8 to “Print.”

The following pictures show examples of the screens captured in Windows 8 you would encounter when printing using a Xerox® PS Class Driver for Color Printers.



| Class Driver: Features Available | Class Driver: Features Not Available |
|----------------------------------|---|
| Duplex | Job Types (including Secure Print) |
| Copies | Xerox® Accounting |
| Collation | Watermarks |
| Color vs. Black and White | Booklet Printing |
| N-Up | Many Finishing Options (Some stapling choices are supported) |
| Orientation | Media Size and Type Selections |
| | Paper Tray Options |
| | Print Quality |

Printing in Windows RT.

Windows RT is a version of Windows 8 intended for use with mobile devices that have lower computing resources. Windows RT is not available for purchase; it ships pre-installed with the mobile device. Microsoft has designed Windows RT to only allow usage of software that ships with the operating system or installs from the Windows Store.

Windows RT restricts printing to the use of the class drivers that are included with the operating system. Windows RT does include Xerox class drivers that enable printing to most Xerox® devices; however, Microsoft does not allow new class drivers to be added or updated in Windows RT or Windows 8. And, we are not able to distribute class drivers via www.xerox.com/drivers. In addition, since Windows RT does not support the use of full-featured V3 drivers, printing choices in Windows RT are very limited in comparison to Windows 8. For robust printing support from Windows RT, you may want to consider the Xerox® Mobile Print Solution. For more information about the Xerox® Mobile Print offering and other mobile solutions, visit www.xerox.com/mobile.

Xerox and EFI Digital Front Ends

Background: Microsoft announced that a Windows 10 upgrade can be performed through Windows Updates starting July 29th, 2015. A "Get Windows 10" notification may pop up on servers asking to upgrade to Windows 10 OR your customers may ask questions about Windows 10. First, notify your customers to dismiss the notification. All Xerox digital front ends (e.g. Xerox, EFI) are specifically designed systems combining an operating system, system software, and custom electronics (e.g. acceleration components). As such, servers running Windows XP, Windows 7, Windows 8, etc, will not support the Windows 10 upgrade directly at the server.

What to do: Please do not install Windows 10 directly on a Digital Front End / Server. In many industries, such mission critical Windows servers are expected to remain on Windows 7 for some time. Security and other fixes will be supported on current versions of Windows (e.g. Window 7) with all the latest security support continuing through January 14th, 2020.

Customer Client PC's on Windows 10: For Client PCs with Windows 10, Xerox print drivers will be available to support Windows 10.

What to do: Please visit <http://www.xerox.com/about-xerox/prINTER-driver-update/enus.html> to learn more.

Xerox Support Contact Information

For additional assistance or clarification about the driver compatibility information presented in this document, please contact your local Xerox Customer Support Centre, Xerox Customer Support at 1-800-821-2797 (USA), TTY 1-800-855-2880, or visit www.support.xerox.com.

Additional Resources

- View details about Windows 8 and 10:
<http://www.windows.microsoft.com>
- Windows 8 answers:
http://www.answers.microsoft.com/en-us/windows/forum/windows_8
- Windows 10 answers:
http://www.answers.microsoft.com/en-us/windows/forum/windows_10